

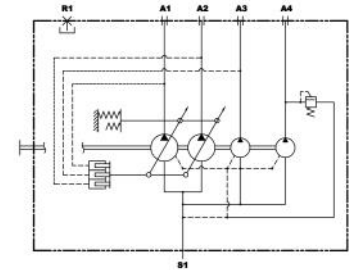
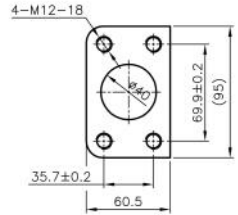
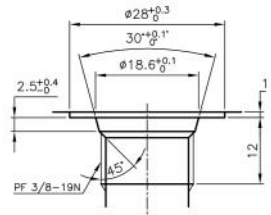
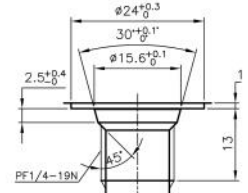
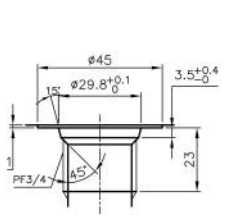
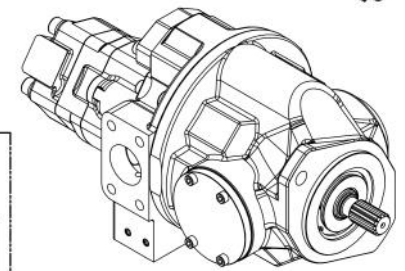
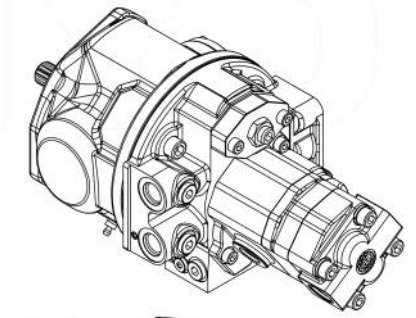
**OPERATING SPECIFICATIONS**  
**1. MAX. DISPLACEMENT**

P1	25.5MPa
P2	25.5MPa
P3	23.5MPa
P4	4.9MPa

**2. RATED SPEED : 2600rpm**  
**3. MAX WORKING PRESSURE : 25.5(260)MPa(kgf/cm<sup>2</sup>)**

INVOLUTE SPLINE 오목표

외경 Profile	76H
외경公差	13
기어면의 치수	#19.5
외경公差	1.5
모듈	30°
기어면의 각도	#18.6-#18.7
외경公差	#21.6-#21.7
기어면의 형식	Side Fitting
표준	DIN54810



DETAIL-DELIVERY PORT  
\*SCALE : 2/1

DETAIL-DRAIN PORT-R  
\*SCALE : 4/1

DETAIL-DRAIN PORT-R1  
\*SCALE : 4/1

SAE 1 1/2  
FOR SUCTION PORT  
\*SCALE : 1/1

HYDRAULIC CIRCUIT FOR PRINCIPLE