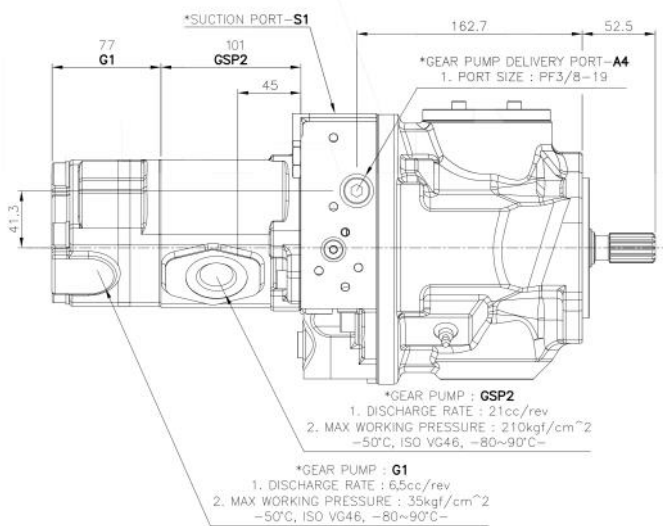
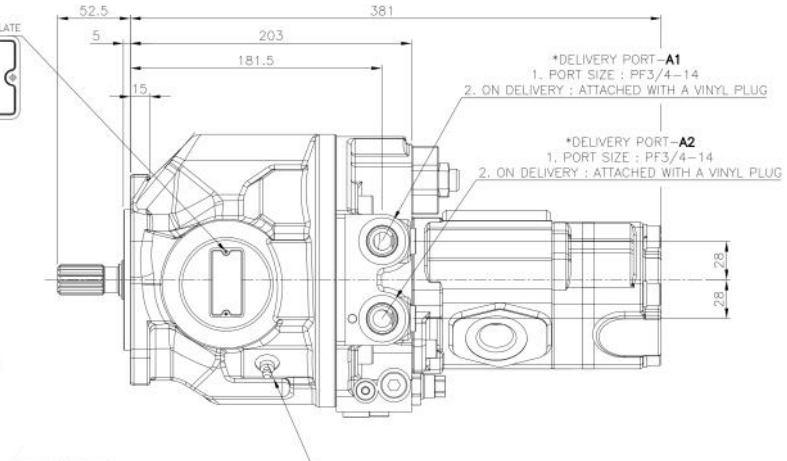
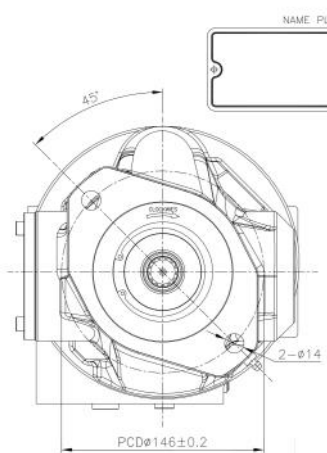
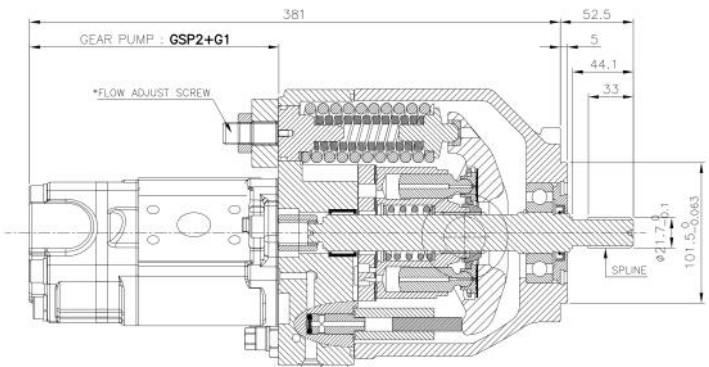


MODEL: 160-2125  
PART NO: 160-2125  
REV: 1.0



# DOUBLE GEAR PUMP



## OPERATING SPECIFICATIONS

### 1. MAX. DISPLACEMENT

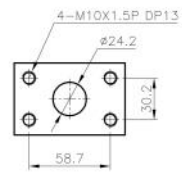
P1	25.5MPa
P2	25.5MPa
P3	23.5MPa
P4	4.9MPa

### 2. RATED SPEED : 2600rpm

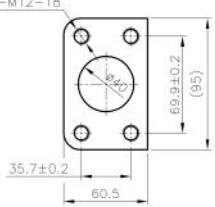
### 3. MAX WORKING PRESSURE : 25.5(260)MPa(kgf/cm<sup>2</sup>)

INVOLUTE SPLINE 牙條圖

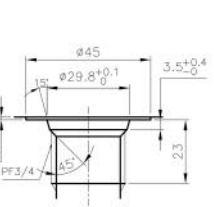
牙 數 Tooth Profile	13
齒 數 Number of Teeth	13
齒 輪 節 徑 Pitch Diameter	φ19.5
齒 輪 模 數 Module	1.5
齒 輪 壓 角 Pressure Angle	30°
齒 輪 外 徑 Major Dia	φ18.6~φ18.7
齒 輪 內 徑 Minor Dia	φ21.6~φ21.7
齒 輪 啮 合 Fitting	Slide Fitting
齒 輪 標 準 Standard	DN54810



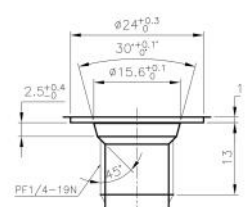
GEAR PUMP SUCTION PORT (ZX60)  
SAE J518 1-1/4(CODE 61)  
\*SCALE : 1/1



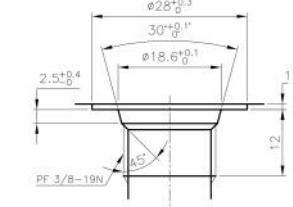
SAE 1 1/2  
FOR SUCTION PORT  
\*SCALE : 1/1



DETAIL-DELIVERY PORT  
\*SCALE : 2/1



DETAIL-DRAIN PORT-R  
\*SCALE : 4/1



DETAIL-DRAIN PORT-R1  
\*SCALE : 4/1

